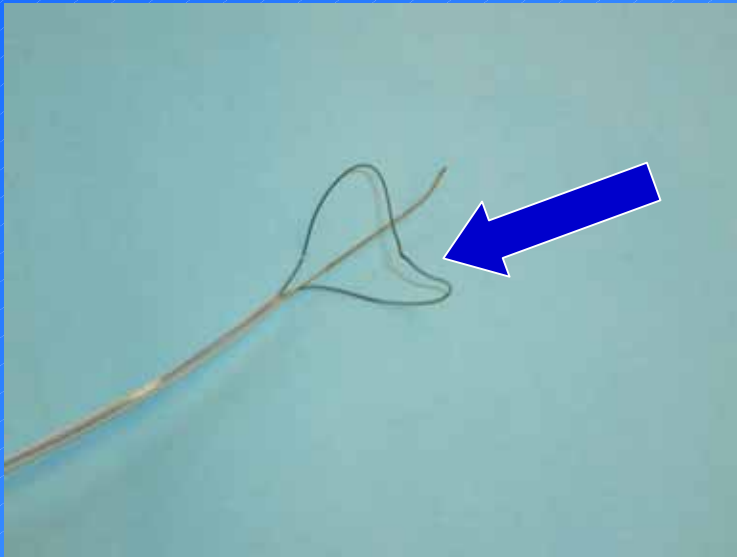




Presents the new 3-Dimensional
Open Loop Designed for foreign
bodies with no open end!

Loopmaster-Sochman
Snare

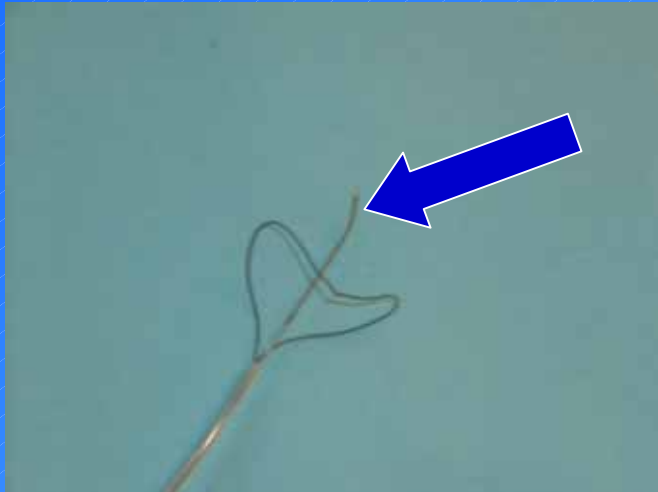
Loopmaster-Sochman Snare with Open Loop Design and extra Guide Wire



- Real 3-Dimensional retrievalability; to provide best manipulation options!
- High upstanding hoop force for excellent procedural success !

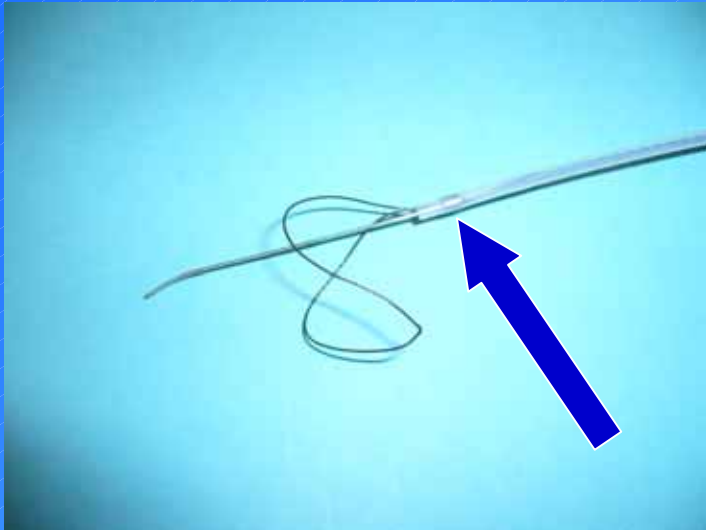
* Closed Loop Designed Snares can not manipulate around a foreign body!

Loopmaster-Sochman Snare with real 1:1 Guide Wire



- Easy Manipulation and grabbing even in difficult procedures with the integrated Guide Wire
- The BIGG Torque device allows the physician to easy manipulate in all 3-Dimensional directions

Loopmaster-Sochman Snare with well integrated PT-marker band



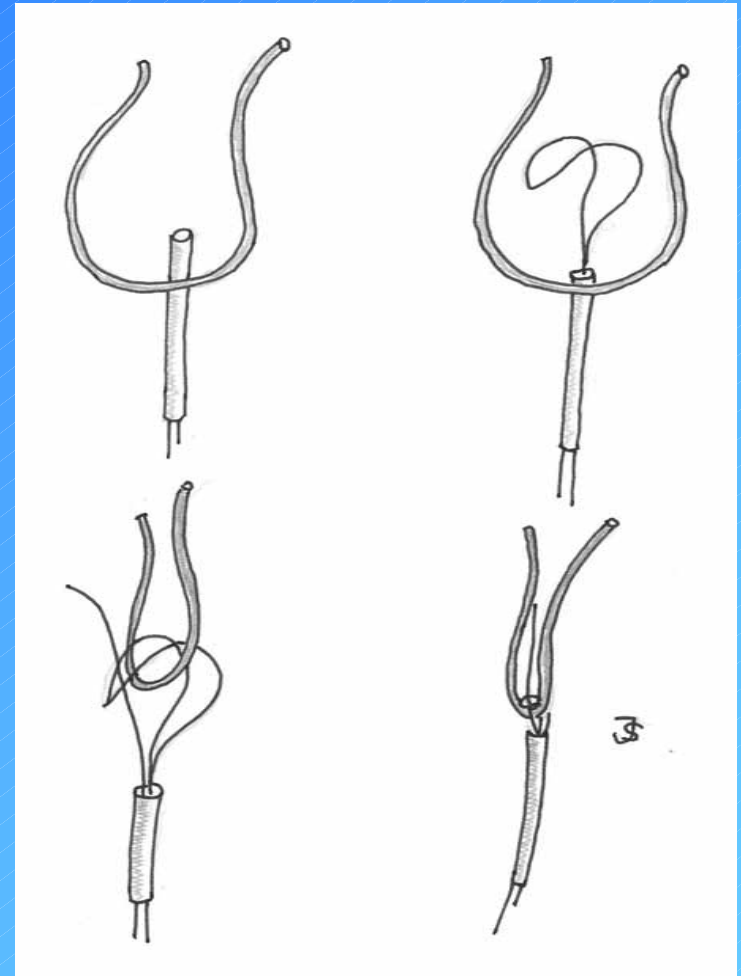
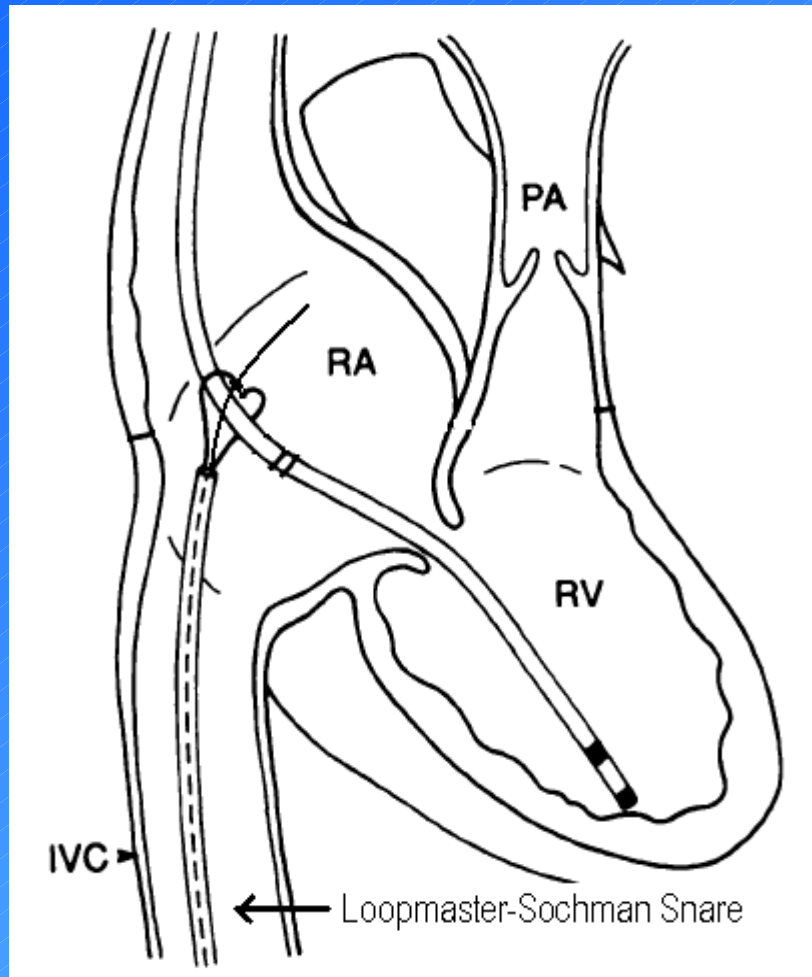
- Platinum marker integrated in the catheter for extra product safety even when using extra force!
- Platinum Marker provides extra visibility to enhance procedural success!

Loopmaster-Sochman Snare lowest Sheath compatibility

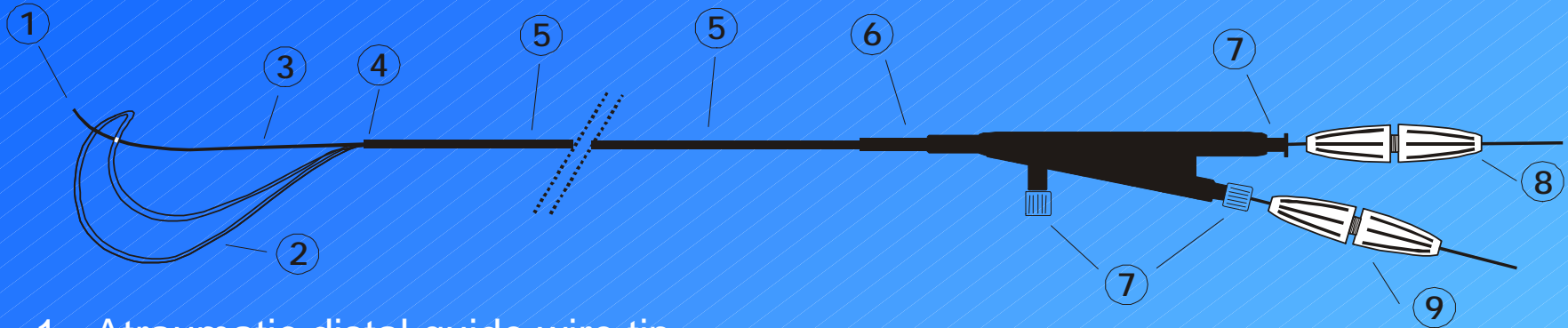


- Loopmaster-Sochman Snare has only 8F CSI compliance compared to 12F and more to devices currently on the market!
- Minimizing puncture site and minimizing complication rate!

Loopmaster Retrieval Techniques



Technical Description



1. Atraumatic distal guide wire tip
2. Nitinol Snareloop
3. Complement guidewire
4. Radiopaque platinum inner marker
5. Highly flexible shaft
6. Supportive sleeve
7. Luer connector
- 8./ 9. Extra "BIGG" torque device to ease manipulation

<u>Product Code</u>	<u>Loop-Diameter (mm)</u>	<u>Length (cm)</u>	<u>Introducer</u>	<u>Introducer</u>
		<u>Loop/GW</u>	<u>Sheath (cm)</u>	<u>Sheath (F)</u>
ASL-25	25 mm	130/150	110	8